



Construction

Horizontal multi-stage close coupled pumps in **chrome-nickel stainless steel**.
 Compact and robust construction, without protruding flange and with single-piece lantern bracket and base.
 Single-piece barrel casing, with front suction port above pumps axis and radial delivery at top.
 Filling and draining plugs on the middle of the pump, accessible from any side (like the terminal box).

Applications

For water supply.
 For clean liquids, without abrasives, which are non-aggressive for stainless steel (with suitable seal materials, on request).
 Universal pump, for domestic use, for civil and industrial applications, for garden use and irrigation.

Operating conditions

Liquid temperature from - 15 °C to + 110 °C.
 Ambient temperature up to 40 °C.
 Maximum permissible pressure in the pump casing: 10 bar.

Motor

2-pole induction motor, 60 Hz (n = 3450 rpm).
MXH: three-phase 220 / 380 V.
MXHM: single-phase 220 V.
 With thermal protector up to 1.1 kW.
 Capacitor inside the terminal box.
 Insulation class F.
 Protection IP 54.
 Constructed in accordance with: IEC 34; IEC 335-2-41; EN 60335-2-41; IEC 529, EN 60529.

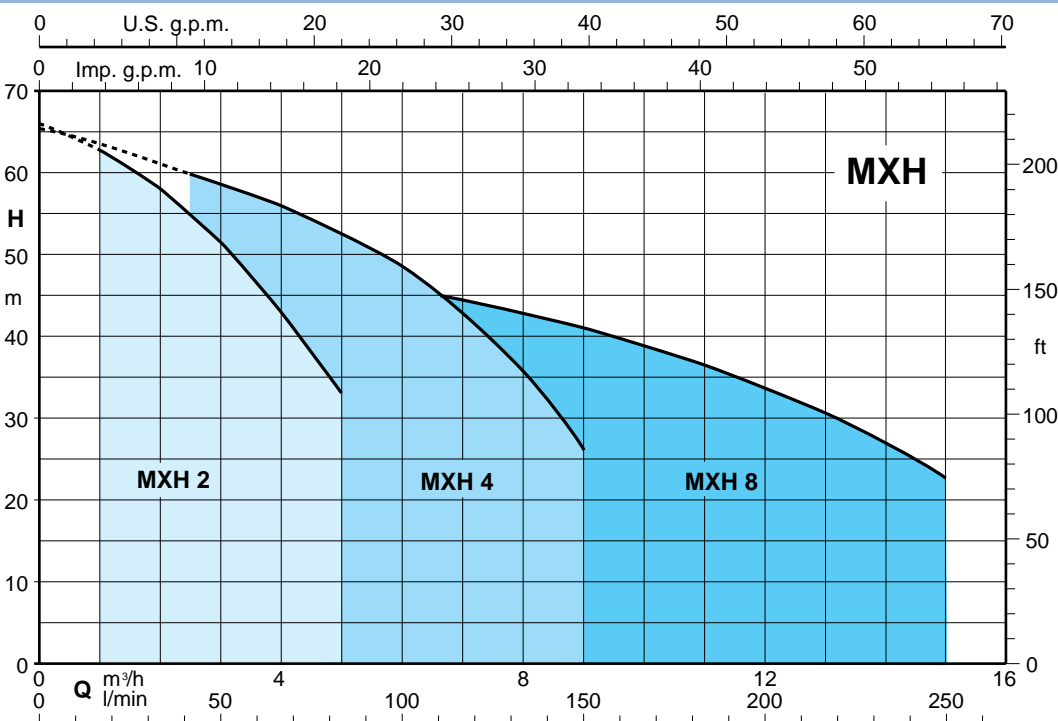
Materials

Component	Material
Pump casing	Chrome-nickel steel AISI 304
Stage casing	Chrome-nickel steel AISI 304
Wear ring	PTFE (Teflon)
Impeller	Chrome-nickel steel AISI 304
Casing cover	Chrome-nickel steel AISI 304
Spacer sleeve	Chrome-nickel steel AISI 304
Pump shaft	Chrome-nickel steel AISI 303
Plug	Chrome-nickel steel AISI 303
Mechanical seal with seat according to ISO 3069	Ceramic alumina, carbon, EPDM (Other materials on request)

Special features on request

- Other voltages.
- Protection IP 55.
- Special mechanical seal
- Seal rings in FPM.
- Higher or lower liquid or ambient temperatures.

Coverage chart n = 3450 rpm



Performance $n \approx 3450$ rpm

	3 ~ 220 V 380 V			1 ~ 220 V			P ₂		Q										
	A	A	IA/IN	A	IA/IN	kW	HP	m ³ /h		l/min	0	1	1,5	2	2,5	3	3,5	4	4,5
MXH 201-60E	1,7	1	4,7	MXHM 201-60E	2,3	1,8	0,25	0,34	H m	0	16,6	25	33,3	41,6	50	58,3	66,6	75	83,3
MXH 202-60E	3,3	1,9	4	MXHM 202-60E	5	3,3	0,55	0,75		16	15,2	14,5	13,7	13	12	10,7	9,6	8,5	7
MXH 203-60E	4,2	2,4	4,3	MXHM 203-60E	6,5	3,3	0,75	1		33	31	30	28,5	27	25,5	23,5	21	19	16
MXH 204-60E	5,6	3,2	4,7	MXHM 204-60E	8,9	3	1,1	1,5		49,5	47	45,5	43,5	41	38,5	35,5	32	28,5	24
										66	63	60,5	58	55	51,5	47,5	43	38,5	33

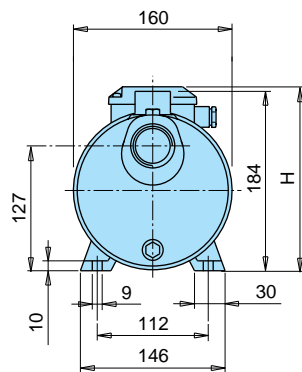
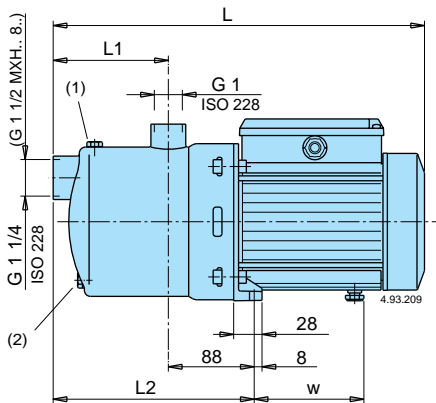
	3 ~ 220 V 380 V			1 ~ 220 V			P ₂		Q										
	A	A	IA/IN	A	IA/IN	kW	HP	m ³ /h		l/min	0	2,5	3	3,5	4	5	6	7	8
MXH 401-60E	2	1,2	4	MXHM 401-60E	2,8	2,7	0,33	0,45	H m	0	41,6	50	58,3	66,6	83,3	100	116	133	150
MXH 402-60E	4,2	2,4	4,3	MXHM 402-60E	6,5	3,3	0,75	1		16	14,5	14	13,5	13	11,7	10,2	8,5	6,5	4
MXH 403-60E	5,6	3,2	4,7	MXHM 403-60	8,9	3	1,1	1,5		32,5	29,5	29	28,5	27,5	26	23,5	20,5	17	12,5
MXH 404-60E	8	4,6	5,6	MXHM 404-60	11	3,3	1,5	2		49	45,5	44,5	43,5	42	39,5	36	31,5	26,5	20
										65,5	60	59	57,5	56	52,5	48,5	42,5	35,5	26

	3 ~ 220 V 380 V			1 ~ 220 V			P ₂		Q										
	A	A	IA/IN	A	IA/IN	kW	HP	m ³ /h		l/min	0	6,5	8	9	10	11	12	13	14
MXH 801-60E	3,3	1,9	4	MXHM 801-60E	5	3,3	0,55	0,75	H m	0	108	133	150	166	183	200	216	233	250
MXH 802-60	8	4,6	5,6	MXHM 802-60	11	3,3	1,5	2		16,5	14,4	14	13,2	12,3	11,3	10	8,8	7,3	5,6
MXH 803-60	9	5,2	5							33,5	30,4	29	28	26,5	25	23	20,5	18	15
										51	45	42,5	41	38,5	36,5	33,5	30,5	26,5	22,5

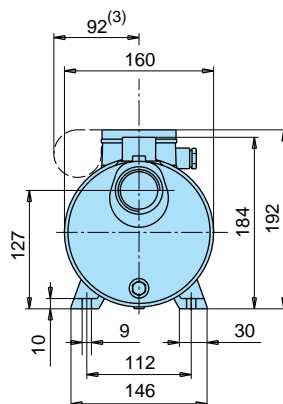
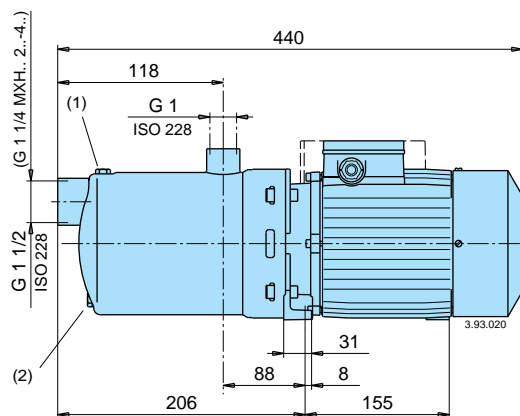
P₂ Rated motor power output.
IA/IN = D.O.L. starting current / Rated current

Test results with clean cold water, without gas content.
Tolerances according to ISO 9906, annex A.

Dimensions and weights



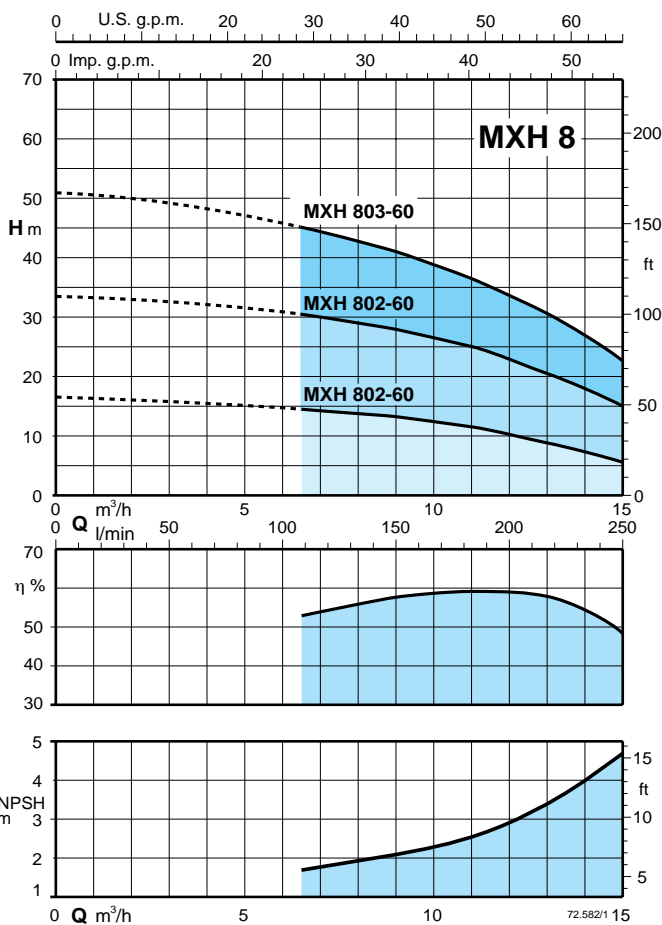
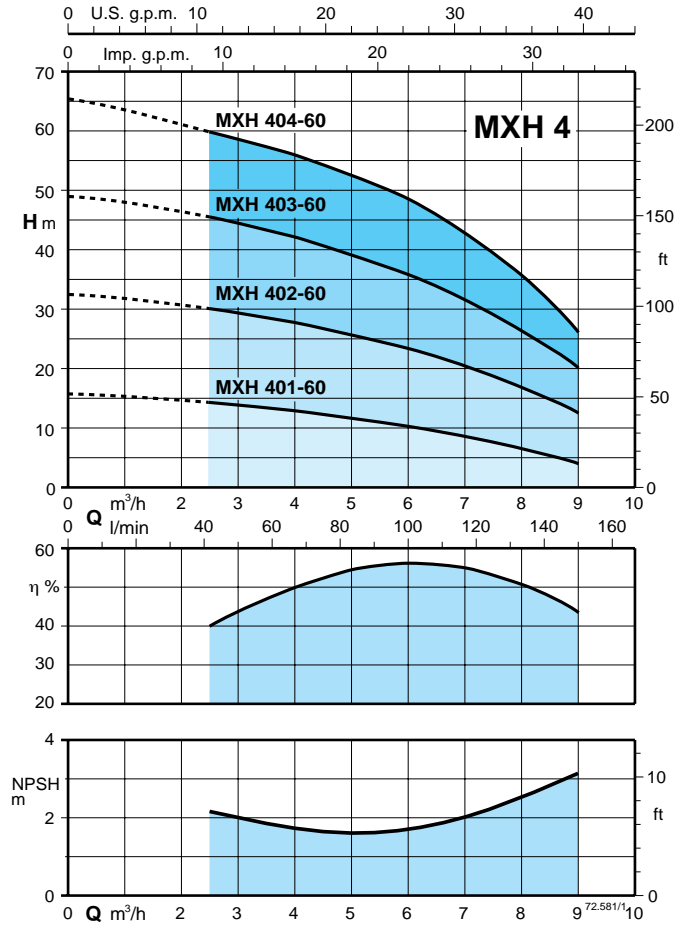
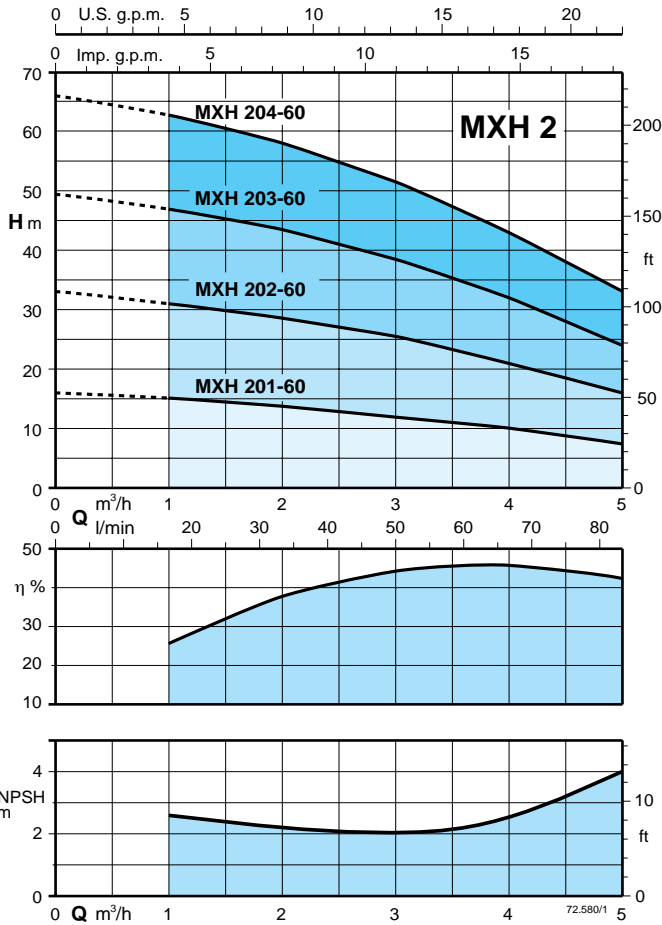
TYPE	mm					kg	
	L	L1	L2	H	w	MXH	MXHM
MXH 201E-60 - MXHM 201E-60	331	94	182	176	98,5	6,6	6,7
MXH 202E-60 - MXHM 202E-60	357	94	182	189	112	9,1	10,1
MXH 203E-60 - MXHM 203E-60	357	94	182	189	112	10,5	11,5
MXH 204E-60	381	118	206	189	112	12,5	-
MXH 401E-60 - MXHM 401E-60	331	94	182	176	98,5	6,6	6,7
MXH 402E-60 - MXHM 402E-60	357	94	182	189	112	10	11
MXH 403E-60	357	94	182	189	112	12	-
MXH 801E-60 - MXHM 801E-60	381	118	206	189	112	9,7	10,5

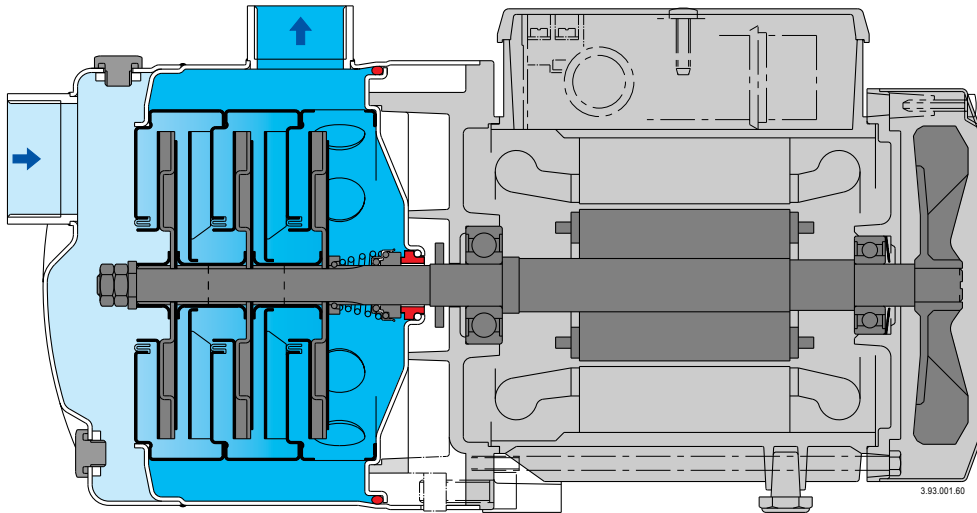


TYPE	kg	
	MXH	MXHM
MXHM 204-60	-	17,7
MXHM 403-60	-	17,2
MXH 404-60 - MXHM 404-60	18,5	19,2
MXH 802-60 - MXHM 802-60	18	18,9
MXH 803-60	18,3	

(1) Filling (2) Draining (3) MXHM

Characteristic curves $n = 3450 \text{ rpm}$



Features

- **Extra safety**
against running dry, with the suction port above pump axis.
- **Reliable**
All hydraulic parts in contact with the pumped liquid are of stainless steel.
For liquids from -15 to 110 °C.
- **Robust**
Single-piece, thick barrel casing.
- **Compact**
Single-piece lantern bracket and base.
Without protruding flange.
- **Greater protection**
against leakage, with the pump casing cover separated from the motor shield. Possibility of inspecting the seal through the side apertures between the two walls.
Greater protection against water entering the motor from outside provided by an extension of the pump casing around the lantern bracket.